



Bryan Bishop
and partners

Saxon Road
Welwyn, AL6 9JR



Saxon Road

Welwyn, AL6 9JR

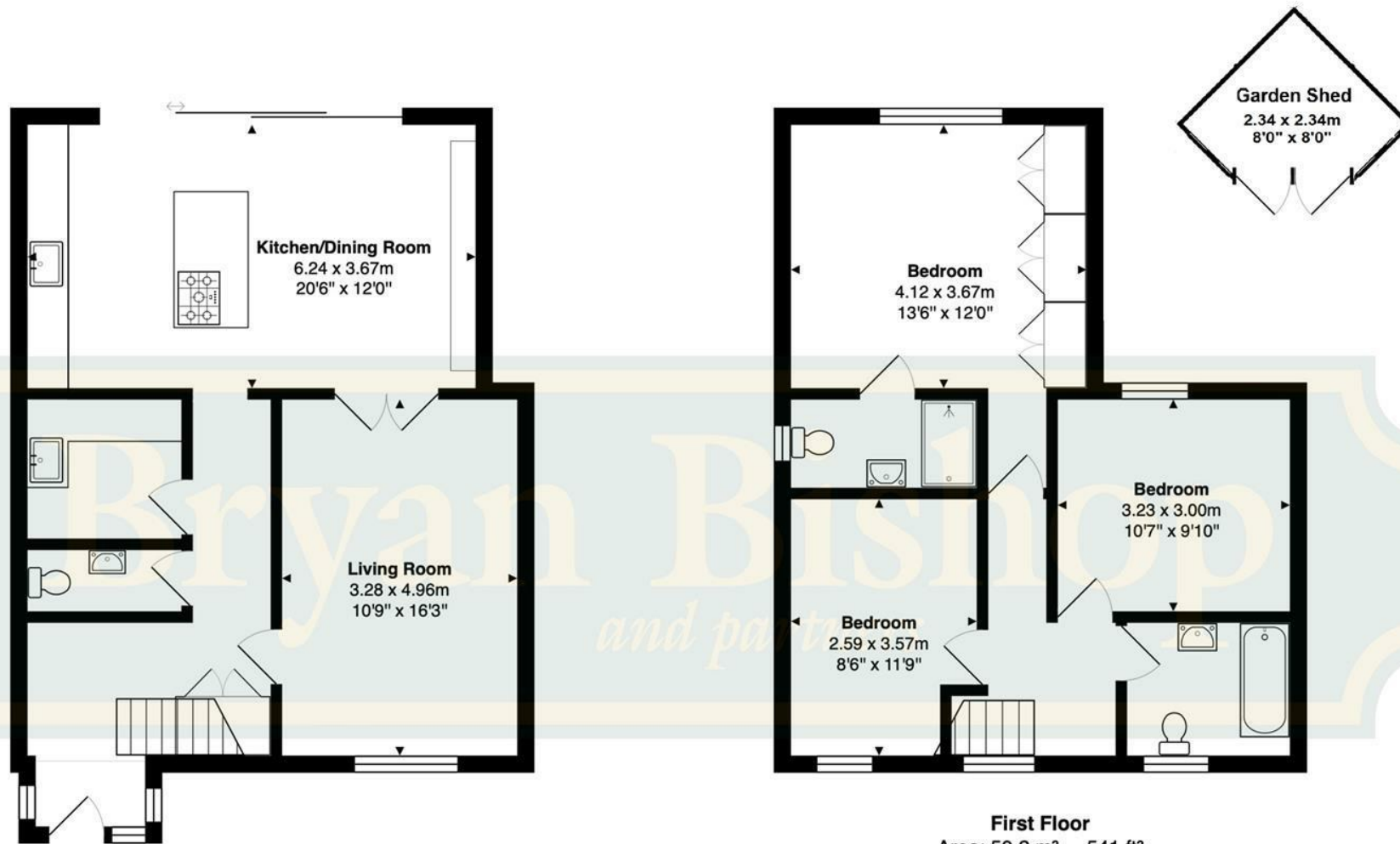












Ground Floor
 Area: 59.3 m² ... 638 ft²

First Floor
 Area: 50.2 m² ... 541 ft²

Total Area: 109.5 m² ... 1179 ft²
Total Area (including Garden Shed): 114.97 m² ... 1237.52 ft²

Energy Efficiency Rating		Current	Potential
Very energy efficient - lower running costs			
(92 plus) A			
(81-91) B			
(69-80) C			
(55-68) D			
(39-54) E			
(21-38) F			
(1-20) G			
Not energy efficient - higher running costs			
England & Wales			
EU Directive 2002/91/EC			









Bryan Bishop
and partners

6a High Street | Welwyn | AL6 9EG | 01438 718877 | info@bryanbishop.co.uk | www.bryanbishop.co.uk Find us on

